



The ultimate 5.8Ghz **RB711** CPE

EASY+ROBUST+VERSATILE

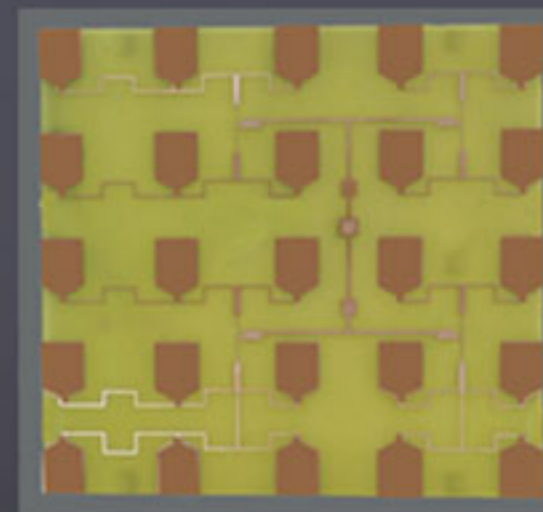
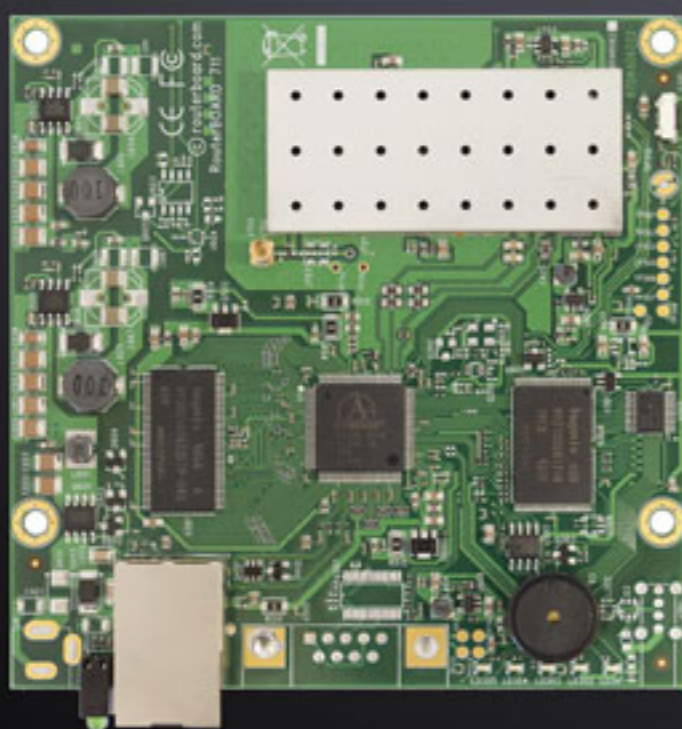
- ★ **All in ONE** solution
- ★ **Exclusive** single/dual phase built-in antennas
- ★ Built-in Mikrotik RB711 board
- ★ ABS weather proof material

Dimensions: **259(H)x215(L)x98(W)**mm

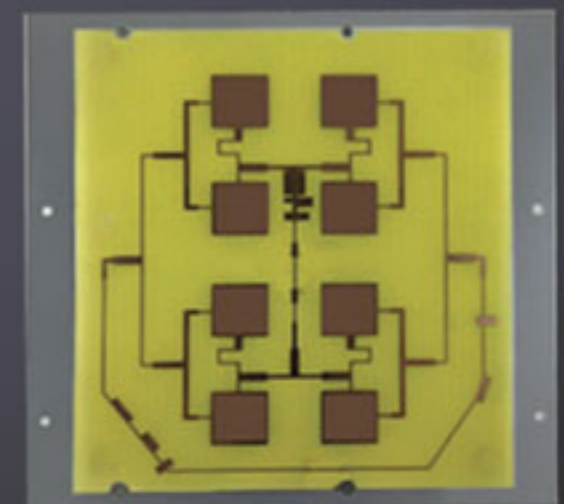


Board details:

CPU speed: 400MHz
RAM: 32MB
Architecture: MIPS-BE
LAN ports: 1
Integrated Wireless: 1, MMCX
Wireless standards: 802.11an
Power Jack: 10-28V
Temperature range: -30C to +60C
RouterOS License: Level3



or



Built-in
18dBi antenna
5.15~5.85Ghz
Single phase
Polarity adjustable

Built-in
16dBi antenna
5.15~5.85Ghz
Dual phase
MIMO design

for more information please contact:

sales@kozumi-usa.com

www.kozumi-usa.com

model: **MK-RB711CPE**