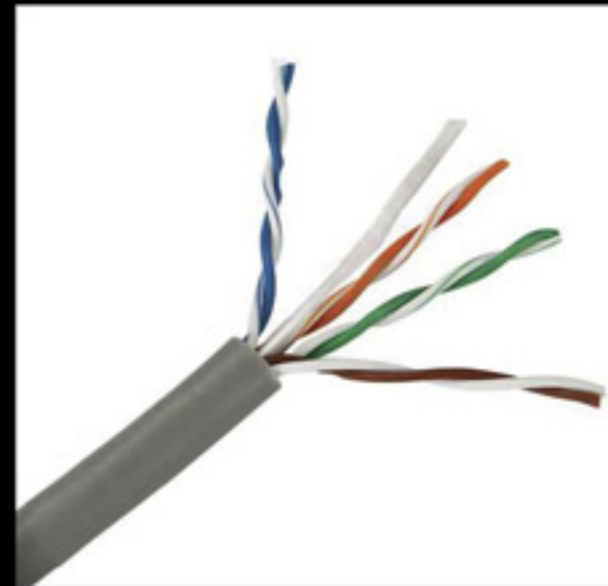
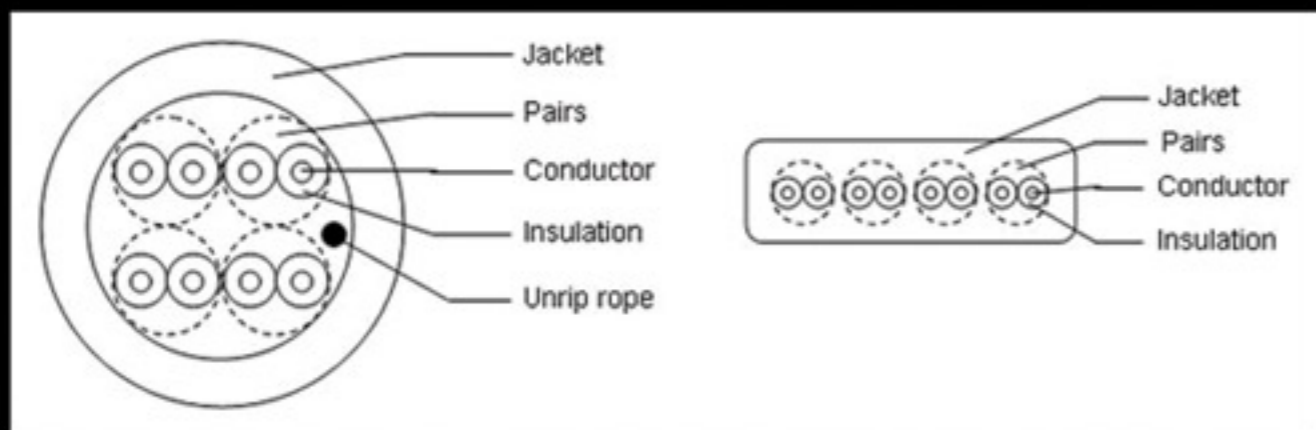




Professional Cat5e UTP Internal Network Cable

Model name: KC-5EUTPI
 Rated Temperature: 60°C or 75°C
 Unshielded twisted pairs:
 Conductor: 26AWG or 24AWG Stranding or Solid Bare copper
 Insulation: HD-PE
 Unrip rope: optional
 Jacket: PVC or LSNH
 Impedance: $100 \pm 15\% \Omega$ at 1~100MHz
 Reference standard: YD/T1019-2001、ISO/IEC11801、ANSI/TIA/EIA-568B、UL 444
 Length: CCA 4*2*0.5mm 305m/box

Print Legend: CM or CMR



Cable Assembly Specification:

Shape	Conductor		Insulation		Core Number	Jacket		
	AWG	Specification (mm)	Material	Thickness (NOM.mm)		Material	Thickness (NOM.mm)	OD (NOM.mm)
Circular Cable	26	1/0.404	HD-PE	0.18	4P	PVC or LSNH	0.55	4.8
		7/0.16	HD-PE	0.18	4P	PVC or LSNH	0.55	5.0
	24	1/0.511	HD-PE	0.18	4P	PVC or LSNH	0.55	5.4
		7/0.203	HD-PE	0.18	4P	PVC or LSNH	0.55	5.5
Flat Cable (Non-sign)	30	7/0.10	HD-PE	0.13	4P	PVC	0.30	1.75*6.2
	28	7/0.127	HD-PE	0.13	4P	PVC	0.30	1.90*7.0
	24	7/0.203	HD-PE	0.18	4P	PVC	0.50	3.0*9.0

KC-5EUTPI