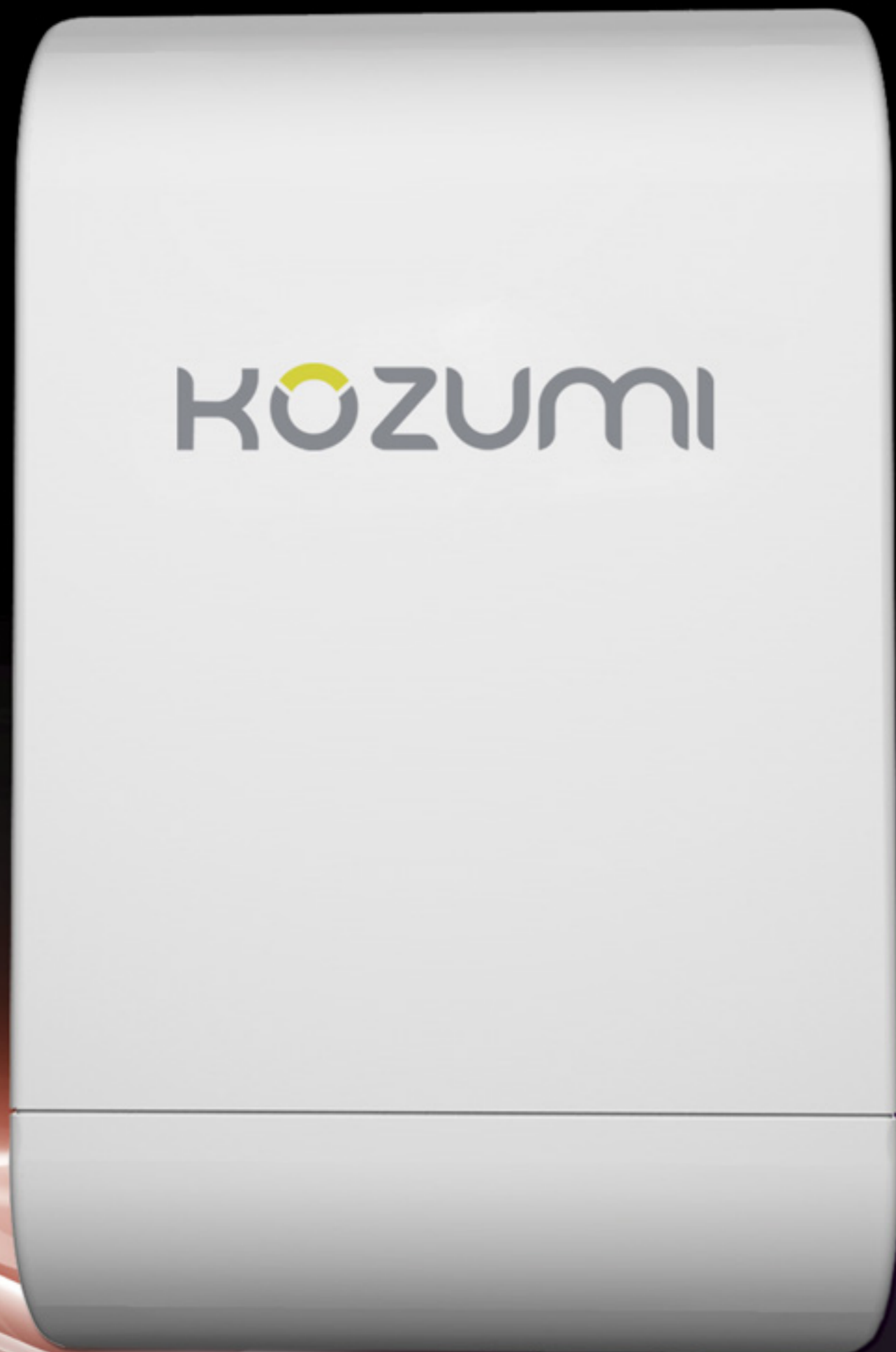


# KOZUMI

## AIR FORCE ONE 5 V2

WIRELESS HIGH POWER 5.8GHZ CPE



**14 dBi**  
dual polarity  
antenna

**26 dBm**  
output  
power

**150Mbps**  
high speed  
transfer

**5.8Ghz**  
802.11a/n  
standard

### Highlights:

- 1- IEEE 802.11n draft 2.0 compliance
- 2- Support IEEE 802.11a
- 3- Operates in the 5GHz ISM band
- 4- Enables bandwidth of up to 150Mbps
- 5- Topology : Point to Point  
: Point to Multi Point
- 6- Operation Modes: Access Point, WDS, Bridge, Client Bridge
- 7- Support 8 Multi-BSSID
- 8- Maximum Security with 802.1x, WPA, and AES
- 9- Over load current protection
- 10- Wide Range Voltage support (24-48VDC)
- 11- Integrated Power over Ethernet (PoE)

## Technical Specifications

Wireless Radio: 802.11 a /n (draft 2.0) compliant  
 Ethernet : 10/100BASE-TX  
 LED Indicators: 1x Power , 1x LAN, 1 x WLAN  
 Data Transfer Rate:  
 IEEE802.11a : 6 / 9 / 12 / 18 / 24 / 36 / 48 / 54  
 IEEE802.11n : Draft 2.0

Frequency Range:  
 A Mode: 5.15~5.35 & 5.725~ 5.825 GHz for US  
 4.9~5.25 GHz for Japan  
 5.15~5.35 & 5.47~5.725 GHz for ETSI  
 N Mode : 5.15~5.35 & 5.725~ 5.825 GHz for US  
 4.9~5.25 GHz for Japan  
 5.15~5.35 & 5.47~5.725 GHz for ETSI

Channel Spacing: A Mode: 20MHz  
 N Mode : 20/40MHz

Media Access Protocol: CSMA / CA with ACK  
 Modulation Method:  
 A Mode: OFDM with BPSK, QPSK, QAM, and 64QAM  
 N Mode: BPSK, QPSK, QAM, 16-QAM, 64-QAM

Operating Channels:  
 A Mode:  
 US: 12 (Ch:36,40,44,48,52,56,60,64,149,153,157, 161)  
 Japan: 4 (Ch:34,38,42,46)and 7( 4.92, 4.94, 4.96,4.98, 5.04, 5.06, 5.08GHz) (Subject to change)  
 ETSI:19 (Ch:36,40,44,48,52,56,60,64,100,104,108, 112,116,120,124,128,132,136,140)

N @ 5GHz Mode:  
 US: 12 (Ch:36,40,44,48,52,56,60,64,149,153,157,161)  
 Japan: 4 (Ch:34,38,42,46)and 7( 4.92, 4.94, 4.96,4.98, 5.04, 5.06, 5.08GHz)  
 ETSI:19 (Ch:36,40,44,48,52,56,60,64,100,104,108, 112,116,120,124,128,132,136,140)

Transmit Power: 26 dBm  
 Receiver Sensitivity: -97dBm  
 Operating Temperature: -20 °C ~ 60 °C  
 Storage Temperature: -20 °C ~ 70 °C  
 Operating Humidity: 10% to 80% Non-Condensing  
 Antenna: 14dBi dual polarity antenna 5.8Ghz  
 Power Supply: 24V DC Power  
 Dimensions: 195mm(H) x 115 mm (L) x 5.9mm (W)

## Especificaciones Técnicas

Wireless Radio: 802.11 a /n (draft 2.0) compatible  
 Ethernet : 10/100BASE-TX  
 Indicadores de LED: 1x Power , 1x LAN, 1 x WLAN  
 Datos de Transmisión:  
 IEEE802.11a : 6 / 9 / 12 / 18 / 24 / 36 / 48 / 54  
 IEEE802.11n : Draft 2.0

Frecuencia Operativa:  
 Modo A: 5.15~5.35 & 5.725~ 5.825 GHz (US)  
 4.9~5.25 GHz (Japón)  
 5.15~5.35 & 5.47~5.725 GHz(ETSI)  
 Modo N : 5.15~5.35 & 5.725~ 5.825 GHz (US)  
 4.9~5.25 GHz (Japón)  
 5.15~5.35 & 5.47~5.725 GHz (ETSI)

Espacio entre banda : Modo A: 20MHz  
 Modo N : 20/40MHz

Media Access Protocol: CSMA / CA y ACK  
 Metodo de Modulación:  
 Modo A: OFDM con BPSK, QPSK, QAM, y 64QAM  
 Modo N: BPSK, QPSK, QAM, 16-QAM, 64-QAM

Frecuencia de Banda:  
 Modo A:  
 US: 12 (Ch:36,40,44,48,52,56,60,64,149,153,157, 161)  
 Japón: 4 (Ch:34,38,42,46)and 7( 4.92, 4.94, 4.96,4.98, 5.04, 5.06, 5.08GHz)  
 ETSI:19 (Ch:36,40,44,48,52,56,60,64,100,104,108, 112,116,120,124,128,132,136,140)

Modo N @ 5GHz:  
 US: 12 (Ch:36,40,44,48,52,56,60,64,149,153,157,161)  
 Japón: 4 (Ch:34,38,42,46)and 7( 4.92, 4.94, 4.96,4.98, 5.04, 5.06, 5.08GHz)  
 ETSI:19 (Ch:36,40,44,48,52,56,60,64,100,104,108, 112,116,120,124,128,132,136,140)

Fuerza de Salida: 26 dBm  
 Sensibilidad: -97dBm  
 Temperatura Operativa: -20 °C ~ 60 °C  
 Temperatura de almacenamiento: -20 °C ~ 70 °C  
 Humedad: 10% to 80% sin condensación  
 Antena: Antena de 14dBi doble polarización 5.8Ghz  
 Fuente de alimentación: 24V DC  
 Dimensiones: 195mm(H) x 115 mm (L) x 5.9mm (W)

## Especificações Técnicas

Wireless Radio: 802.11 a /n (draft 2.0) compatível  
 Ethernet : 10/100BASE-TX  
 Indicações do LED: 1x Power , 1x LAN, 1 x WLAN  
 Transmissão de dados:  
 IEEE802.11a : 6 / 9 / 12 / 18 / 24 / 36 / 48 / 54  
 IEEE802.11n : Draft 2.0

Frequência Operativa:  
 Modo A: 5.15~5.35 & 5.725~ 5.825 GHz (US)  
 4.9~5.25 GHz (Japão)  
 5.15~5.35 & 5.47~5.725 GHz (ETSI)  
 Modo N : 5.15~5.35 & 5.725~ 5.825 GHz (US)  
 4.9~5.25 GHz (Japão)  
 5.15~5.35 & 5.47~5.725 GHz (ETSI)

Espaço entre banda: Modo A: 20MHz  
 Modo N : 20/40MHz

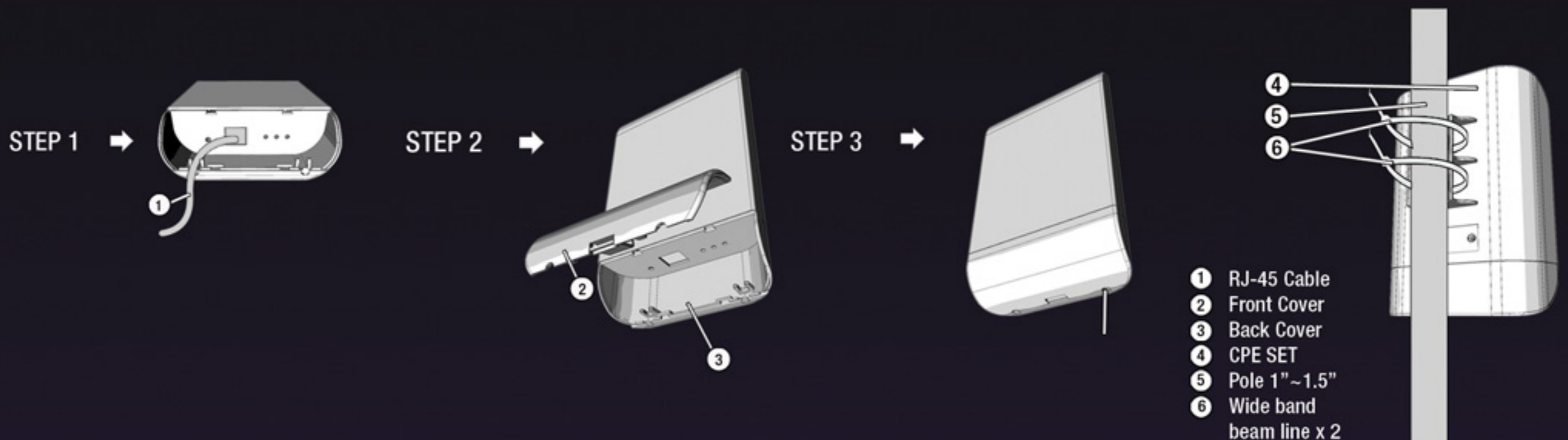
Media Access Protocol: CSMA / CA com ACK  
 Metodo de Modulação:  
 Modo A: OFDM com BPSK, QPSK, QAM, e 64QAM  
 Modo N: BPSK, QPSK, QAM, 16-QAM, 64-QAM

Banda de Frequência:  
 Modo A:  
 US: 12 (Ch:36,40,44,48,52,56,60,64,149,153,157, 161)  
 Japão: 4 (Ch:34,38,42,46)and 7( 4.92, 4.94, 4.96,4.98, 5.04, 5.06, 5.08GHz)  
 ETSI: 19(Ch:36,40,44,48,52,56,60,64,100,104,108, 112,116,120,124,128,132,136,140)

Modo N @ 5GHz:  
 US:12 (Ch:36,40,44,48,52,56,60,64,149,153,157,161)  
 Japão: 4 (Ch:34,38,42,46)and 7( 4.92, 4.94, 4.96,4.98, 5.04, 5.06, 5.08GHz)  
 ETSI: 19 (Ch:36,40,44,48,52,56,60,64,100,104,108, 112,116,120,124,128,132,136,140)

Força de saída: 26 dBm  
 Sensibilidade: -97dBm  
 Temperatura Operativa: -20 °C ~ 60 °C  
 Temperatura de Armazenamento: -20 °C ~ 70 °C  
 Humidade: 10% to 80% sem condensação  
 Antena: 14dBi antena de dupla polarização 5.8Ghz  
 Fonte de alimentação: 24V DC  
 Dimensões: 195mm(H) x 115 mm (L) x 5.9mm (W)

## Installation Steps:



For more information, please visit:  
[www.kozumi-usa.com](http://www.kozumi-usa.com)

**AIR FORCE ONE 5 V2**  
 WIRELESS HIGH POWER 5.8GHZ CPE